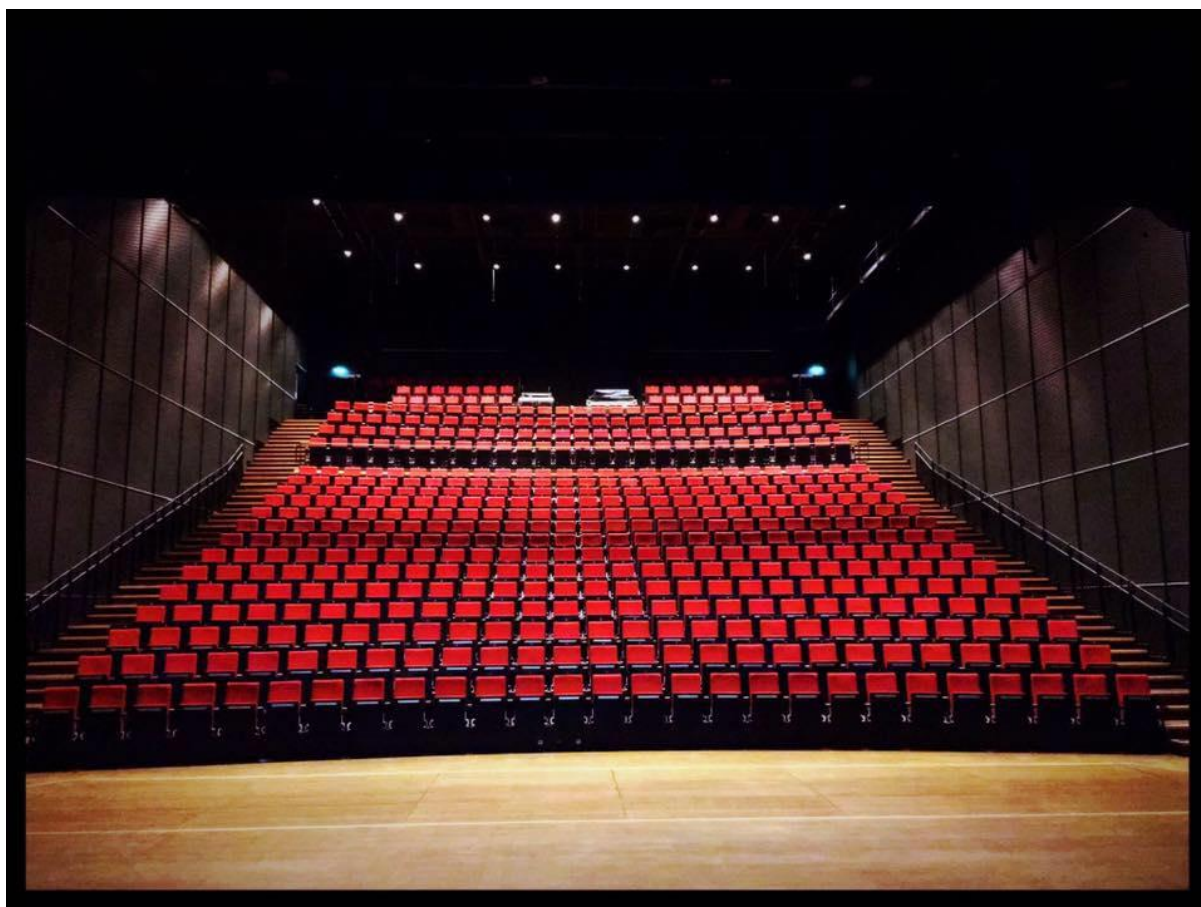


KONGSBERG MUSIKKTEATER

www.kongsbergmusikkteater.no

Technical Specifications



Contents

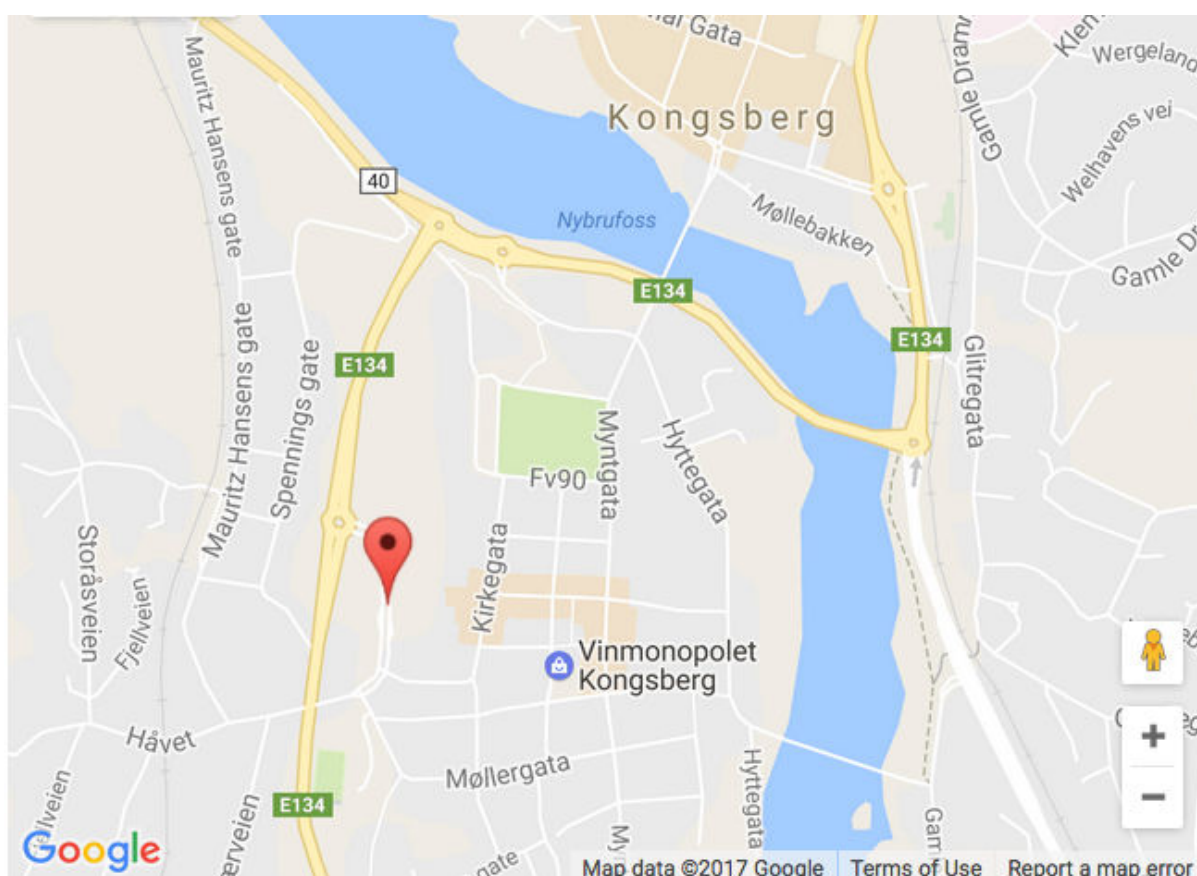
General information	2
Address	2
Map	2
Time Zone	3
Contact	3
Get in	3
Loading entrance dimensions	3
Lift from ground floor to 3rd floor	3
MUSIKKTEATERET - DETAILS	4
Seating	4
FOH	4
Stage	5
Sound facilities	6
Lighting facilities	9
AV facilities	12
SØLVSALEN - DETAILS	13
Seating	13
FOH	13
Stage	13
Power	14
Sound Facilities	14
Lighting facilities	15
AV	15
Other Equipment	16
Microphones	16
Sound equipment	16
Haze and fans	17
Vinyl Dance Floor	17
Flexible stage system	17
Backline/Instruments	18
Music stands and lights	19
Dressing rooms	19

General information

Address

Krona
Hasbergsvei 36
3616 Kongsberg
Norway

Map



GPS Coordinates: 59.665233, 9.643884

Building summary

Kongsberg Musikkteater is a multipurpose theatre generally used for music, theater, shows and conferences. The theatre has modern stagecraft, sound reinforcement and lighting solutions.

As one of the few venues in Europe, Kongsberg Musikkteater is equipped

with Meyersound Constellation electronic acoustic system
(<https://meyersound.com/product/constellation/>)
Kongsberg Musikkteater has two venues; Musikkteateret and Sølvsalen -
both with good backstage, locker room and green room facilities.

Venue plans are available and can be sent upon request.
Access and load in for any vehicle must be arranged in advance.

General parking can be found in Skauløkka Parkeringshus, in walking
distance from the Venue (Address: Hasbergs vei 66,3616 Kongsberg)

Smoking is not permitted in any of the internal areas.

Loading area access from Oslo via E134. See map.

Time Zone

GMT +01:00 Amsterdam, Berlin, Bern, Oslo, Roma, Stockholm, Wien

Contact

www.kongsbergmusikkteater.no

Manager - Per Gustavsen, +47 402 31 088, pg@kongsbergmusikkteater.no

Producer - Eirik Tovsrud Knutsen, +47 959 26 869,

eirik@kongsbergmusikkteater.no

Get in

The loading entrance, stage door and backstage entrance have access from
E134 (See map).

The loading entrance has direct access to stage in Musikkteateret (Large
scene, ground level), and access to cargolift to Sølvsalen (2nd floor)

Loading entrance dimensions

Outside to backstage Door Width 3.4 meter, Height 3.9 meter

Stage to backstage Door Width 2.8 meter, Height 3.2 meter

Lift from ground floor to 3rd floor

Door Width 1.3 meter, Height 2.0 meter, Depth 2.3 m

Maximum payload 1000Kg / 8 pers.

MUSIKKTEATERET - DETAILS

Seating

Musikkteateret has a standard configuration with a total of 604 seats (row A-C + 1-21) - seatplan below.

Row A-C is located in orchestral pit and can be removed for use as orchestral pit or be closed and used as floor on request (for conferences or extended audience capacity when amfi is removed).

Seats in row 1-14 may be removed, giving room for 1200 standing audience and 154 seats.

MUSIKKTEATERET																															
21	604	603	602	601	600	599	598	597	596	FOH												595	594	593	592	591	590	589	588	587	
20										FOH												579	578	577	576	575	574	573			
19										FOH												565	564	563	562	561	560	559			
18	558	557	556	555	554	553	552	551	550	549	548	547	546	545	544	543	542	541	540	539	538	537	536	535	534	533	532	154			
17	531	530	529	528	527	526	525	524	523	522	521	520	519	518	517	516	515	514	513	512	511	510	509	508	507	506	505				
16	504	503	502	501	500	499	498	497	496	495	494	493	492	491	490	489	488	487	486	485	484	483	482	481	480	479	478				
15	477	476	475	474	473	472	471	470	469	468	467	466	465	464	463	462	461	460	459	458	457	456	455	454	453	452	451				
14	450	449	448	447	446	445	444	443	442	441	440	439	438	437	436	435	434	433	432	431	430	429	428	427	426	425	424				
13	423	422	421	420	419	418	417	416	415	414	413	412	411	410	409	408	407	406	405	404	403	402	401	400	399	398	397				
12	396	395	394	393	392	391	390	389	388	387	386	385	384	383	382	381	380	379	378	377	376	375	374	373	372	371	370				
11	369	368	367	366	365	364	363	362	361	360	359	358	357	356	355	354	353	352	351	350	349	348	347	346	345	344	343	378			
10	342	341	340	339	338	337	336	335	334	333	332	331	330	329	328	327	326	325	324	323	322	321	320	319	318	317	316				
9	315	314	313	312	311	310	309	308	307	306	305	304	303	302	301	300	299	298	297	296	295	294	293	292	291	290	289				
8	288	287	286	285	284	283	282	281	280	279	278	277	276	275	274	273	272	271	270	269	268	267	266	265	264	263	262				
7	261	260	259	258	257	256	255	254	253	252	251	250	249	248	247	246	245	244	243	242	241	240	239	238	237	236	235				
6	234	233	232	231	230	229	228	227	226	225	224	223	222	221	220	219	218	217	216	215	214	213	212	211	210	209	208				
5	207	206	205	204	203	202	201	200	199	198	197	196	195	194	193	192	191	190	189	188	187	186	185	184	183	182	181				
4	180	179	178	177	176	175	174	173	172	171	170	169	168	167	166	165	164	163	162	161	160	159	158	157	156	155	154				
3	153	152	151	150	149	148	147	146	145	144	143	142	141	140	139	138	137	136	135	134	133	132	131	130	129	128	127				
2	126	125	124	123	122	121	120	119	118	117	116	115	114	113	112	111	110	109	108	107	106	105	104	103	102	101	100				
1	99	98	97	96	95	94	93	92	91	90	89	88	87	86	85	84	83	82	81	80	79	78	77	76	75	74	73				
A	72	71	70	69	68	67	66	65	64	63	62	61	60	59	58	57	56	55	54	53	52	51	50	49							
B	48	47	46	45	44	43	42	41	40	39	38	37	36	35	34	33	32	31	30	29	28	27	26	25							
C	24	23	22	21	20	19	18	17	16	15	14	13	12	11	10	9	8	7	6	5	4	3	2	1	72						
STAGE																															

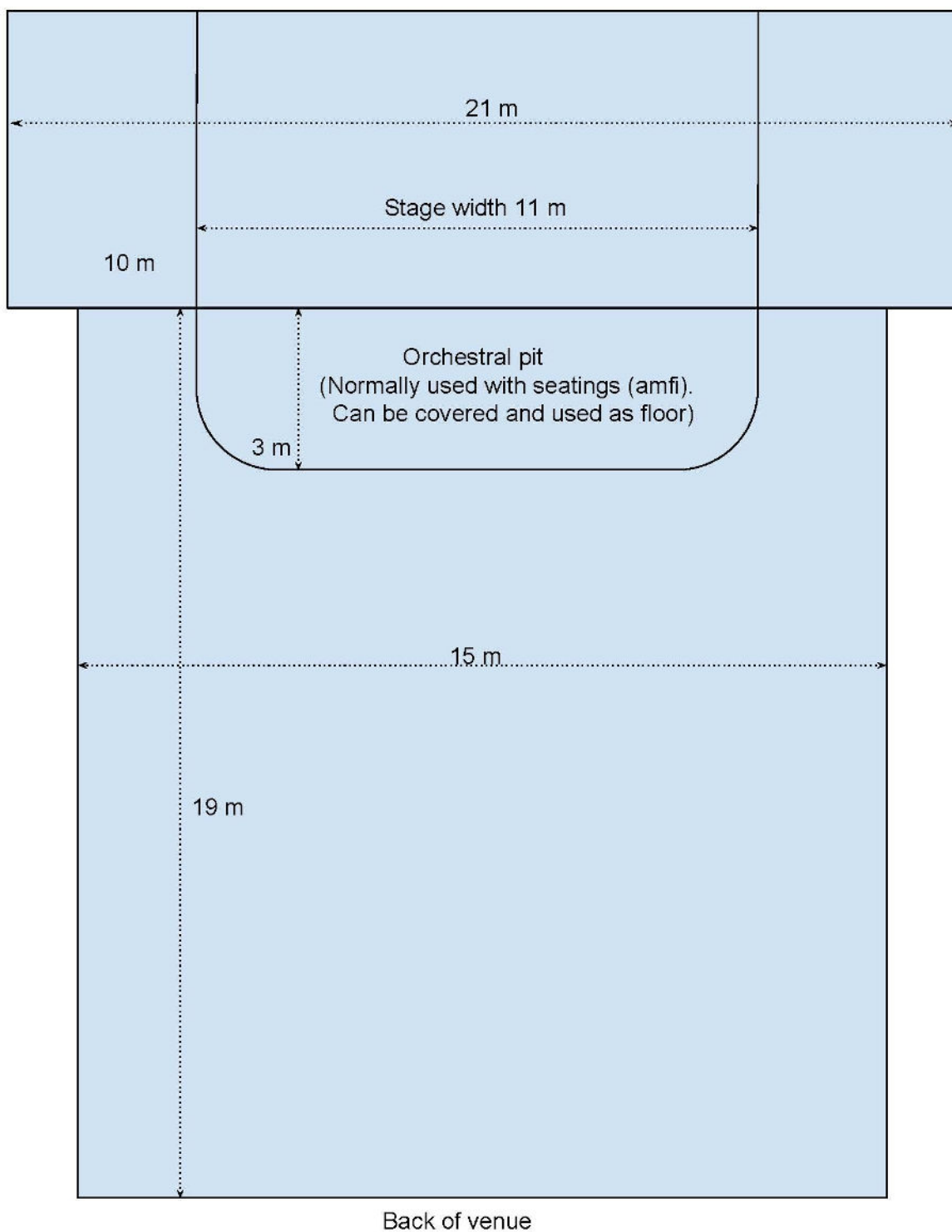
FOH

Technical seatings for Sound/Light-mixer are situated in row 19-21 in Musikkteateret. See seating plan above.

When amfi seatings are removed FOH can be located at floor level.

Stage

Surface: Dark oak parquet, with black vinyl dance floor on top



Power

Quantity	Location	Amps	Phase	Volt	Conn.
2	Stage left and right	63A	3	400V	5 Pin
4	Stage left and right	32A	3		4 Pin
10	Stage, Unswitched	16A	2	230V	Shuko
8	Stage, Switched	16A	2	230V	Shuko
1	Backstage	63A	3	400V	5 Pin
2	Backstage	16A	2	230V	Shuko

Sound facilities

Meyersound Constellation Digital Acoustics

As one of the few concert halls in Europe, Musikkteateret is equipped with a Meyersound Constellation

Constellation is a digital approach to controlling reverberation time, early reflections, and other key ingredients vital to the sonic clarity, warmth, and resonance of the venue. The system integrates 128 high-quality loudspeakers, 38 microphones, digital processing units, patented algorithms, and proprietary certification techniques.

Constellation offers an elegantly simple way to transform architectural acoustics with a finger tap, affording a level of sonic flexibility never before possible.

FOH Console & Processors

Quantity	Equipment	Comments
1	Midas Heritage-D HD96 Digital Mixer	FOH
1	Midas DL251	48 Mic input, 16 output for Heritage-D
1	Midas DL155	8 Mic input, 8 output, 4 AES3 input, 4 AES3 output
1	Klark Teknik DN9650 with Dante interface	Dante for Midas Heritage-D
1	Lexicon PCM92	2 stereo engines

Main Speaker System

Speakers		Equipment	Comment
PA Controller	1	Meyer Sound Galileo Calisto 616	Array processor, controlled by Compass software
PA Main L&R	24	Meyer Sound Mina	4 x 3 Line array groups on Left and Right side
PA Front fill	2	Meyer Sound UPQ-1P	Left and Right side
PA Front fill	8	Meyer Sound UPM-1P	Used in front of audience
PA Sub System	4	Meyer Sound 1100-LFC	2 placed above stage and one Left and Right side.
Cinema Center	1	Meyer Sound UPQ-1P	Positioned on request
Cinema Center	1	Meyer Sound 600-HP	Positioned on request

Stage Monitor System

Quantity	Equipment	Comment
4 (8 ch)	LAB Gruppen IDP 24000	2x 1200 Watt, DSP, total 8 channels Placed in main Rack
2 (4 ch)	LAB Gruppen IDP 24000	2x 1200 Watt, DSP, total 4 channels Placed in a separate Flight
12	Turbosound TMW-115	15" Passive
6	Turbosound iX12	12" Active, Bluetooth, with stand

Wireless Microphone System - Shure Axient Digital
(16 ch Musikkteateret - 4 ch Sølvsalen - 4 ch flexible)

Quantity	Manufacturer	Model	Comment
6	Shure	AD4QE-A	Quad Channel Receiver (470-636 MHz)
24	Shure	ADX LEMO3	Bodypack Transmitter (470-636 MHz)
4	Shure	ADX2	Handheld Transmitter Beta58 (470-636 MHz)
2	Shure	ADX2	Handheld Transmitter KSM9HS Black (470-636 MHz)
4	Shure	AD3	Plug-On Transmitter (470-636 MHz)
1	Shure	AXT600	Axient Spectrum Manager
12	DPA d:fine	4066/4088 + 4063	Headset Microphone

Standard Microphones
(may be used in Sølvsalen as well)

Quantity	Manufacturer	Model	Comment
12	Shure	Beta 58A	
4	Shure	SM58A	
8	Shure	SM57-LCE	
1	Shure	Beta 52A	
1	Shure	Beta 91A XLR	
1	Shure	SM7B	
2	Shure	KSM9 HS	
3	Sennheiser	e906	
4	Sennheiser	e904	
2	Sennheiser	MK 416	Shotgun mic
4	AKG	C414	
8	AKG	C480B	

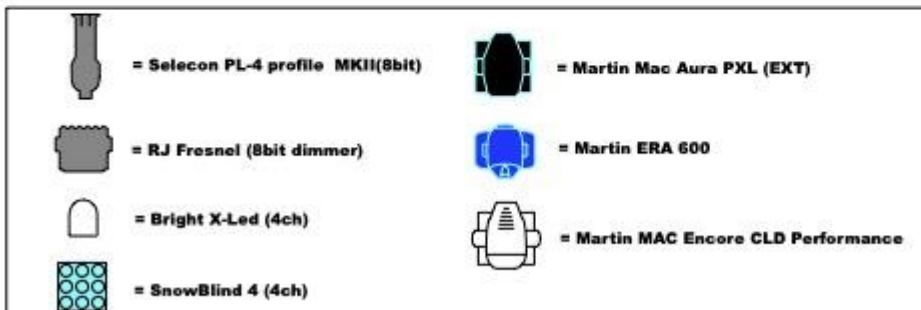
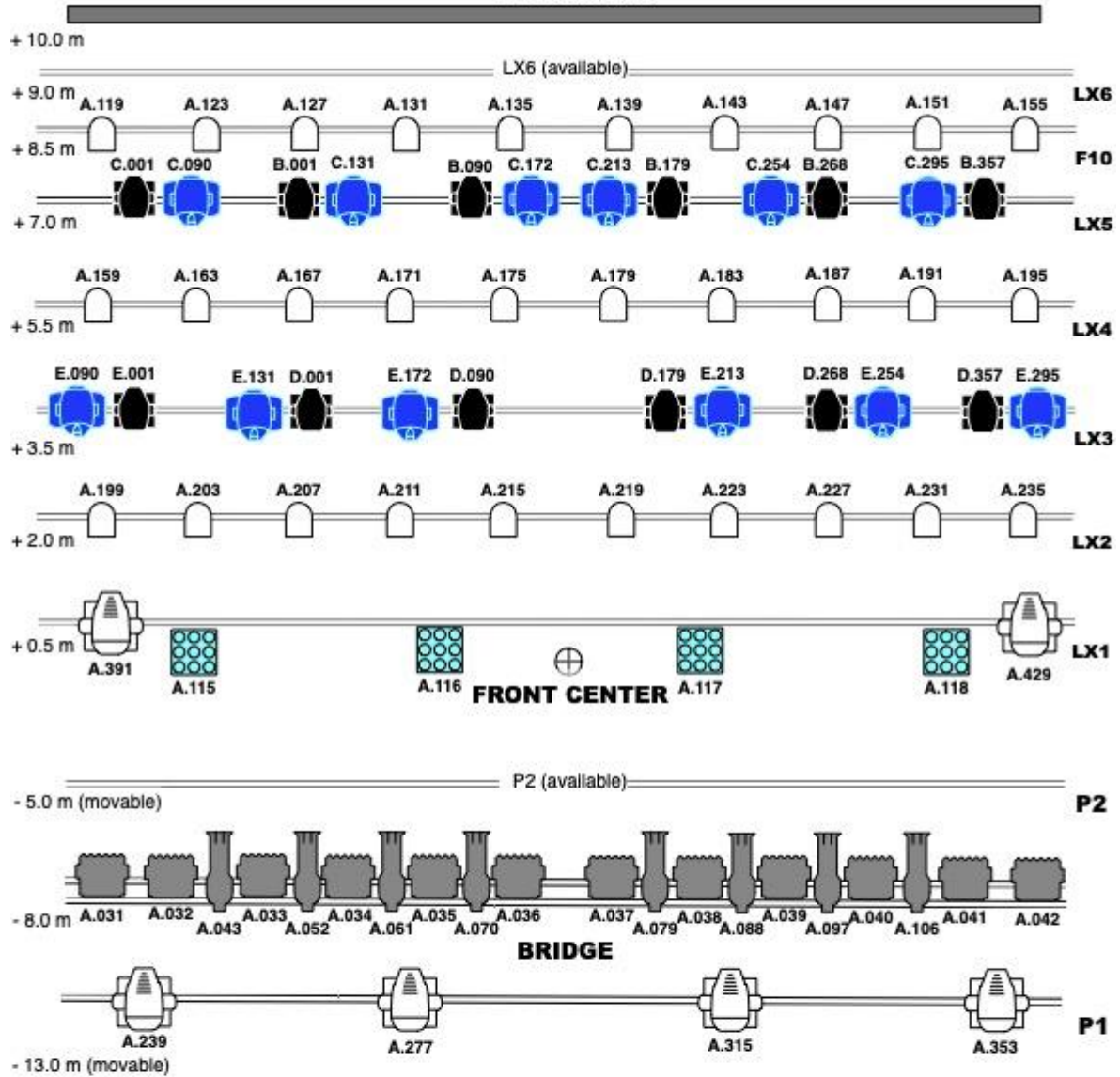
2	AKG	C451 B/ST	Matched stereo
---	-----	-----------	----------------

Lighting facilities

Overview of standard configuration of DMX addresses and universe are available upon request.

Quantity	Manufacturer	Model	Comment
1	MA Lightning	GrandMA 3 Light	FOH
1	MA Lightning	GrandMA 3 PU Medium	Backstage - tech. area
12	Martin	MAC Aura PXL	LX 3 & 5
12	Martin	ERA 600	LX 3 & 5
30	Bright Norway	XLED - RGBW LED Wash	LX 2 & 4, F10
4	Snow	SnowBlind 4	LX 1
8	Selecon	PL-4 Profile	Front - bridge
12	Robert Juliat	RJ ZEP 240 LF Fresnel	Front - bridge
12	Martin	MAC Allure Profile	Available upon request
4	Martin	MAC Aura Wash	Available upon request
6	Martin	Atomic 3000 LED	Available upon request
8	DTS	Flash 2000L (2-lites)	Available upon request
12	Bright Norway	XBAR (RGBW)	Available upon request
12	Bright Norway	XLED - RGBW LED Wash	Available upon request
6		PAR64 Floor - CP62	Available upon request
8		PAR64 - CP62	Available upon request
1	Martin	P3-050 System Controller	Available upon request
2	Okero	619D	6x13 A 400V w/DMX (available upon request)
1	Avolites	Art2000 Powercube 400V	(available upon request)

Back Screen



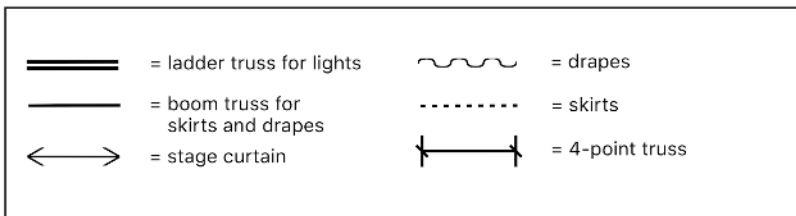
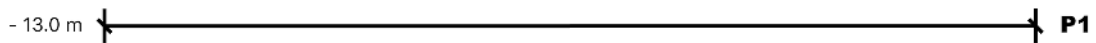
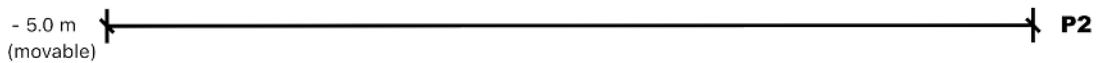
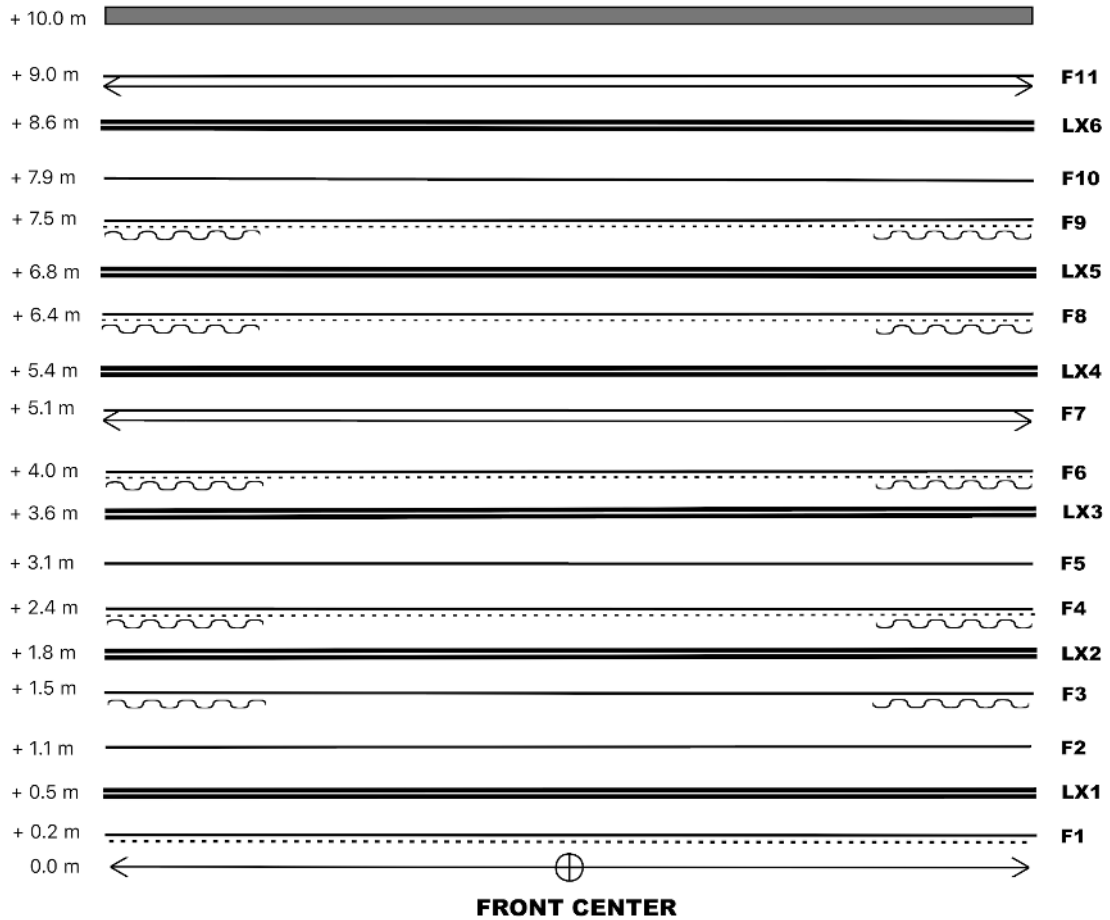
LX max load: 500 kg
F max load: 250 kg
P max load: 250 kg

Hazer: A.474
Fan: A.477
Houselights: A.470
Stairs: A.478
RowNum: A.479
RGB Leds: A.480
Led stripe: A.468

Floor/available: 12 x Martin Mac Allure, 4 x Martin Mac Aura, 6 x Martin Atomic 3000 LED, 12 x Bright X-Led, 12 x Bright X-Bar, 8 x DTS FL2000 2-lites, 6 x PAR64 Floor CP62, 16 x VDO Atomic Dot CLD

KONGSBERG MUSIKKTEATER
LIFT SYSTEM VIEW

Back Screen



LX max load: 500 kg
F max load: 250 kg
P max load: 250 kg

AV facilities

Quantity	Manufacturer	Comment
1	Panasonic PT RQ22K	Installation projector, 4K+, 20000 ANSI Lumen, WUXGA
1	Panasonic PT-RZ970BEJ	Video projector, 10 000 ANSI Lumen, laser light source with optional ET-DLE030 short throw lens (Available upon request)
1	Epson EB-1980WU	Video projector, 5 000 ANSI Lumen, WUXGA HDMI, VGA input (Available upon request)
1	Analogway SPX450	Video Mixer/Scaler 10x SDI/HDMI/VGA input SDI/HDMI output
1	Roland V-1HD	Portable Video switcher 4x HDMI input, HDMI output
1	Blackmagic Design	SDI splitter 1x SDI in, 4x SDI out
1	Blackmagic Design	HDMI to SDI Converter
3	Blackmagic Design	SDI to HDMI Converter
6	BirdDog Studio	SDI/HDMI to NDI + SDI/HDMI cross converter
4	xVision	HDMI to HDBaseT Converter
2	Lynx Technik	HDMI to SDI Converter
2	Lynx Technik	SDI to HDMI Converter
2		Mobile Projection screen 6 x 4 m, Not rear projectable.
	SDI signal distribution	20 patchable SDI in/out on Stage, Technical bridge and FOH

SØLVSALEN - DETAILS

Seating

Sølvsaalen has a standard configuration with a total of 135 seats. See seatplan below.

All seats may be removed, giving room for 200 standing audience.

Sølvsaalen may easily be converted to a blackbox theatre using black panels and curtains, all remotely controlled from an Ipad.

SØLVSALEN

9		135	134	133	132	131	130	129	128	127	126	125	124	123	122	121		9
8		120	119	118	117	116	115	114	113	112	111	110	109	108	107	106		8
7	Trapp	105	104	103	102	101	100	99	98	97	96	95	94	93	92	91	Trapp	7
6		90	89	88	87	86	85	84	83	82	81	80	79	78	77	76		6
5		75	74	73	72	71	70	69	68	67	66	65	64	63	62	61		5
4		60	59	58	57	56	55	54	53	52	51	50	49	48	47	46		4
3		45	44	43	42	41	40	39	38	37	36	35	34	33	32	31		3
2		30	29	28	27	26	25	24	23	22	21	20	19	18	17	16		2
1		15	14	13	12	11	10	9	8	7	6	5	4	3	2	1		1

STAGE

FOH

FOH in Sølvsaalen are situated behind amfi seating.
May be at floor level when amfi seatings are removed.

Stage

Dimensions

Stage width 10.0 m

Stage depth 5.2 m

When amfi is fully retracted the halls dimensions are:

Hall width: 11.0 m

Hall depth: 13.0 m

Surface: Natural oak parquet

Power

Quantity	Location	Amps	Phase	Volt	Conn.
2	Stage left and right	63A	3	400V	5 Pin
1	Stage right	32A	3		4 Pin
2	Stage, Unswitched	16A	2	230V	Shuko
2	Stage, Switched	16A	2	230V	Shuko

Sound Facilities

FOH Console & Processors

Quantity	Equipment	Comments
1	Midas M32 Digital Mixer	

Main Speaker/Stage Monitor System

Speakers		Equipment	Comment
PA Main L&R	4	Tannoy VXP 15	Ceiling mounted
	2	Tannoy VS15	Sub - Ceiling mounted
	4	Tannoy VXP8	Floor
	2	Turbosound TSP118B-AN	Sub (floor)

Wireless Microphone system

Quantity	Manufacturer	Model	Comment
1	Shure	AD4QE-A	Quad Channel Receiver (470-636 MHz)

Standard Microphones

(may be used in Musikkteateret as well)

Quantity	Manufacturer	Model	Comment
4	Shure	SM58-LCE	
4	Shure	SM57-LCE	
1	Shure	Beta 52A	
2	AKG	C451 B/ST	matched stereo

Lighting facilities

Quantity	Manufacturer	Model	Comment
1	MA Lightning	MA3 Compact	with one additional touchscreen
1	Jands	Stage CL	Available upon request
14	Selecon	PL-1 Profile	
6	Bright	XLed (6ch)	
12	Martin	Mac Aura	
4	Martin	ERA 400	

Standard configuration of DMX listed in map. 1 Universe used, 1 universe available for moving heads and other equipment. Usually patched Universe 1 in ceiling, and Universe 2 on floor.

AV

Quantity	Manufacturer	Comment
2	Panasonic PT RZ990	Installation projector, 9400 ANSI lumen, 4K supported, WUXGA. 1 directed to front screen, 1 directed to side screen

Other Equipment

Microphones

(may be used in both venues)

Quantity	Manufacturer	Model	Comment
2	Schoeps	CMC6 / MK4	
1	Beyerdynamic	M-88TG	
1	Shure	SM-7B	
1	Electrovoice	RE-20	
1	DPA	d:facto II	
4	DPA	4060/4061	Instruments
2	DPA	4011	Grand piano - clips
2	DPA	4099	Grand Piano - magnetic foot
10	DPA	4099	with assorted instrument clips
2	Audio-Technica	AT-5045P	

Sound equipment

Quantity	Manufacturer	Model	Comment
12	Klark Teknik	DN1000	Active DI box
3	Klark Teknik	DN200	Active stereo (Phono) DI box
8	Turbosound	XI 12	Active monitors
1	Presonus	StudioLive AR16	Portable Mixer

Haze and fans

Quantity	Manufacturer	Model	Comment
2	MDG	ATMe	1 located at Musikkteateret 1 located at Sølvsalen
1	Martin	JEM Glaciator Dynamic	Usually located in Musikkteateret
1	Martin	JEM ZR44 Himass	
1	Martin	Jem Compact Hazer Pro	Usually located in Sølvsalen
2	Martin	JEM AF-1 DMX FAN	0-2500rpm 1600m ³ /h

Vinyl Dance Floor

6 x 12 m length/1.6m wide

Standard color is black - light grey on the other side

Vinyl Dance Floor cannot be painted, cut or perforated.

Flexible stage system

Kongsberg Musikkteater is equipped with a Nivtec flexible stage system for building risers or “stage on stage”:

Quantity	Width	Length	Type
68	1 m	2 m	Rectangular platform
15	0,5 m	1 m	Rectangular platform
6			Triangle

Backline/Instruments

Grand Pianos

Steinway Model D - Musikkteateret only

Yamaha S6 - Sølvsalen only

Stagepiano:

Nord Stage 3 - 88

Guitar amps

Fender Twin Reverb

Fender 68' Deluxe Reverb

Roland Blues Cube Stage

Bass amp

MarkBass Little Mark III preamp

MarkBass Standard 102 HF cabinet

MarkBass 151 cabinet

Drums

Gretsch Renown Maple - Vintage Pearl

- 22" x 18" bass drum
- 10" x 7" tom
- 12" x 8" tom
- 16" x 14" floor tom
- 14" x 5.5" snare

Cymbals

Zildjian K Custom Dark Series

- 14" Dark Hi-hat
- 16" Dark Crash
- 18" Dark Crash
- 20" Dark Ride

Hardware

- 3 x CS755 cymbal stand
- 1 x HS740A Hi-hat stand
- 1 x SS740A snare drum stand
- 1 x FP7210A foot pedal

Music stands and lights

60 music stands are available on stage. 50 battery powered LED music stand lights.

Dressing rooms

2 Dressing rooms located at ground floor.

One with toilet, shower and full body frontlit mirror. One with 3 frontlit makeup/mirrors.

4 dressing rooms at 3rd floor.

All with 4 frontlit mirrors, full body mirror, shower, TV monitoring with sound. Adjacent with toilets.

Green Room at 3rd floor. Kitchen and kitchen inventory, sofa, TV monitoring with sound.

Iron, ironing board, and hairdryers are available by request.

All dressing rooms can be locked.