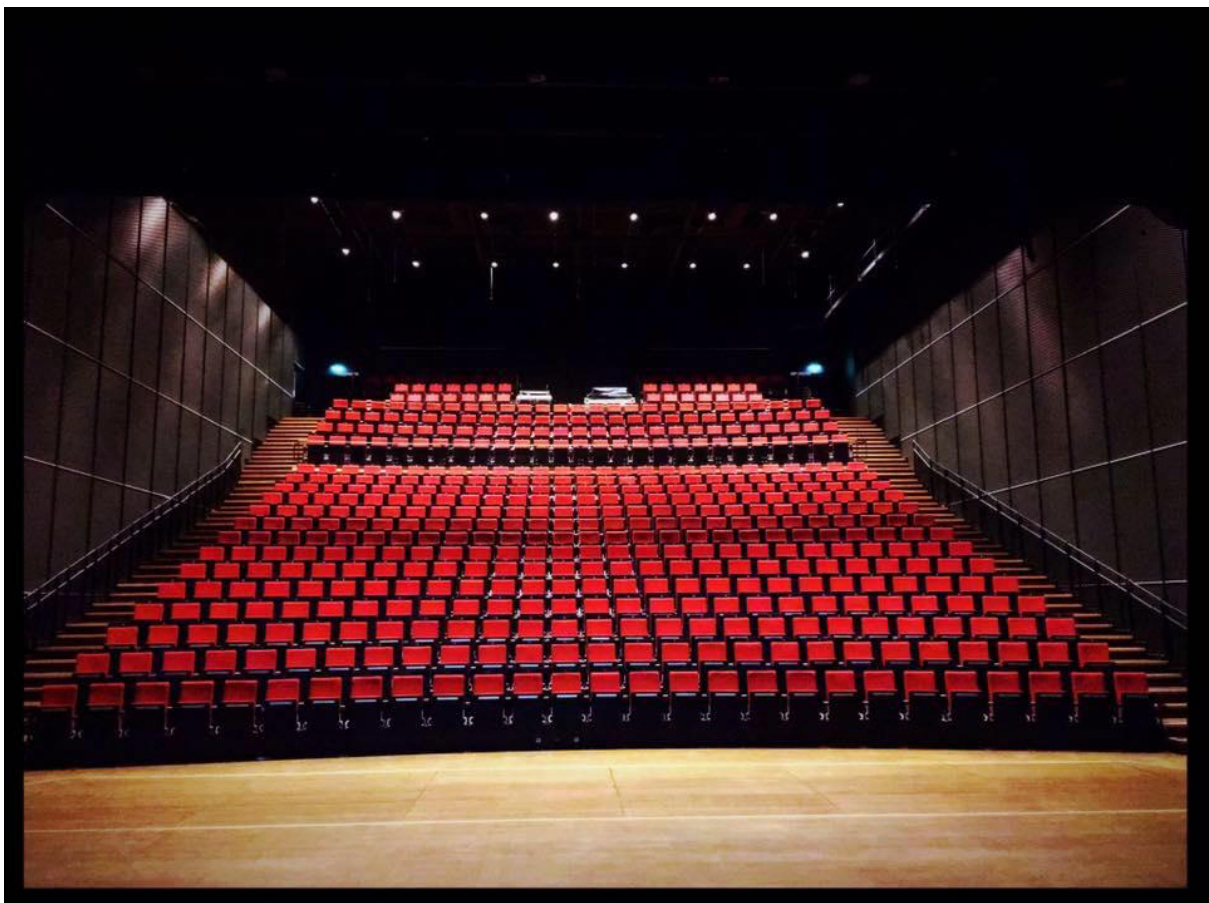


# KONGSBERG MUSIKKTEATER

[www.kongsbergmusikkteater.no](http://www.kongsbergmusikkteater.no)

## Technical Specifications



# Contents

|                                     |    |
|-------------------------------------|----|
| General information                 | 2  |
| Address                             | 2  |
| Map                                 | 2  |
| Time Zone                           | 3  |
| Contact                             | 3  |
| Get in                              | 3  |
| Loading entrance dimensions         | 3  |
| Lift from ground floor to 3rd floor | 3  |
| MUSIKKTEATERET - DETAILS            | 4  |
| Seating                             | 4  |
| FOH                                 | 4  |
| Stage                               | 4  |
| Power                               | 6  |
| Sound facilities                    | 6  |
| Lighting facilities                 | 9  |
| AV facilities                       | 12 |
| SØLVSALEN - DETAILS                 | 13 |
| Seating                             | 13 |
| FOH                                 | 13 |
| Stage                               | 13 |
| Power                               | 14 |
| Sound Facilities                    | 14 |
| Lighting facilities                 | 15 |
| AV                                  | 16 |
| Other Equipment                     | 16 |
| Microphones                         | 16 |
| Sound equipment                     | 17 |
| Haze and fans                       | 17 |
| Flexible stage system               | 17 |
| Backline/Instruments                | 18 |
| Vinyl Dance Floor                   | 19 |
| Music stands and lights             | 19 |
| Dressing rooms                      | 19 |

## General information

### Address

Krona  
Hasbergsvei 36  
3616 Kongsberg  
Norway

### Map



GPS Coordinates: 59.665233, 9.643884

### Building summary

Kongsberg Musikkteater is a multipurpose theatre generally used for music, theater, shows and conferences. The theatre has modern stagecraft, sound reinforcement and lighting solutions.

As one of the few venues in Europe, Kongsberg Musikkteater is equipped with Meyersound Constellation electronic acoustic system (<https://meyersound.com/product/constellation/>)

Kongsberg Musikkteater has two venues; Musikkteateret and Sølvsalen - both with good backstage, locker room and green room facilities.

Venue plans are available and can be sent upon request.  
Access and load in for any vehicle must be arranged in advance.

General parking can be found in Skauløkka Parkeringshus, in walking distance from the Venue (Address: Hasbergs vei 66,3616 Kongsberg)

Smoking is not permitted in any of the internal areas.

Loading area access from Oslo via E134. See map.

## **Time Zone**

GMT +01:00 Amsterdam, Berlin, Bern, Oslo, Roma, Stockholm, Wien

## **Contact**

[www.kongsbergmusikkteater.no](http://www.kongsbergmusikkteater.no)

Manager - Per Gustavsen, +47 402 31 088, [pg@kongsbergmusikkteater.no](mailto:pg@kongsbergmusikkteater.no)

Producer - Eirik Tovsrud Knutsen, +47 959 26 869,

[eirik@kongsbergmusikkteater.no](mailto:eirik@kongsbergmusikkteater.no)

## **Get in**

The loading entrance, stage door and backstage entrance have access from E134 (See map).

The loading entrance has direct access to stage in Musikkteateret (Large scene, ground level), and access to cargolift to Sølvsalen (2nd floor)

### *Loading entrance dimensions*

Outside to backstage Door Width 3.4 meter, Height 3.9 meter

Stage to backstage Door Width 2.8 meter, Height 3.2 meter

### *Lift from ground floor to 3rd floor*

Door Width 1.3 meter, Height 2.0 meter, Depth 2.3 m

Maximum payload 1000Kg / 8 pers.

# MUSIKKTEATERET - DETAILS

## Seating

Musikkteateret has a standard configuration with a total of 604 seats (row A-C + 1-21) - seatplan below.

Row A-C is located in orchestral pit and can be removed for use as orchestral pit or be closed and used as floor on request (for conferences or extended audience capacity when amfi is removed).

Seats in row 1-14 may be removed, giving room for 1200 standing audience and 154 seats.

### MUSIKKTEATERET

|    |     |     |     |     |     |     |     |     |     |     |     |     |     |     |     |     |     |     |     |     |     |     |     |     |     |     |     |     |  |
|----|-----|-----|-----|-----|-----|-----|-----|-----|-----|-----|-----|-----|-----|-----|-----|-----|-----|-----|-----|-----|-----|-----|-----|-----|-----|-----|-----|-----|--|
| 21 | 604 | 603 | 602 | 601 | 600 | 599 | 598 | 597 | 596 | FOH |     |     |     |     |     |     |     |     |     | 595 | 594 | 593 | 592 | 591 | 590 | 589 | 588 | 587 |  |
| 20 |     |     | 586 | 585 | 584 | 583 | 582 | 581 | 580 | FOH |     |     |     |     |     |     |     |     |     | 579 | 578 | 577 | 576 | 575 | 574 | 573 |     |     |  |
| 19 |     |     | 572 | 571 | 570 | 569 | 568 | 567 | 566 | FOH |     |     |     |     |     |     |     |     |     | 565 | 564 | 563 | 562 | 561 | 560 | 559 |     |     |  |
| 18 | 558 | 557 | 556 | 555 | 554 | 553 | 552 | 551 | 550 | 549 | 548 | 547 | 546 | 545 | 544 | 543 | 542 | 541 | 540 | 539 | 538 | 537 | 536 | 535 | 534 | 533 | 532 | 154 |  |
| 17 | 531 | 530 | 529 | 528 | 527 | 526 | 525 | 524 | 523 | 522 | 521 | 520 | 519 | 518 | 517 | 516 | 515 | 514 | 513 | 512 | 511 | 510 | 509 | 508 | 507 | 506 | 505 |     |  |
| 16 | 504 | 503 | 502 | 501 | 500 | 499 | 498 | 497 | 496 | 495 | 494 | 493 | 492 | 491 | 490 | 489 | 488 | 487 | 486 | 485 | 484 | 483 | 482 | 481 | 480 | 479 | 478 |     |  |
| 15 | 477 | 476 | 475 | 474 | 473 | 472 | 471 | 470 | 469 | 468 | 467 | 466 | 465 | 464 | 463 | 462 | 461 | 460 | 459 | 458 | 457 | 456 | 455 | 454 | 453 | 452 | 451 |     |  |
| 14 | 450 | 449 | 448 | 447 | 446 | 445 | 444 | 443 | 442 | 441 | 440 | 439 | 438 | 437 | 436 | 435 | 434 | 433 | 432 | 431 | 430 | 429 | 428 | 427 | 426 | 425 | 424 |     |  |
| 13 | 423 | 422 | 421 | 420 | 419 | 418 | 417 | 416 | 415 | 414 | 413 | 412 | 411 | 410 | 409 | 408 | 407 | 406 | 405 | 404 | 403 | 402 | 401 | 400 | 399 | 398 | 397 |     |  |
| 12 | 396 | 395 | 394 | 393 | 392 | 391 | 390 | 389 | 388 | 387 | 386 | 385 | 384 | 383 | 382 | 381 | 380 | 379 | 378 | 377 | 376 | 375 | 374 | 373 | 372 | 371 | 370 | 378 |  |
| 11 | 369 | 368 | 367 | 366 | 365 | 364 | 363 | 362 | 361 | 360 | 359 | 358 | 357 | 356 | 355 | 354 | 353 | 352 | 351 | 350 | 349 | 348 | 347 | 346 | 345 | 344 | 343 |     |  |
| 10 | 342 | 341 | 340 | 339 | 338 | 337 | 336 | 335 | 334 | 333 | 332 | 331 | 330 | 329 | 328 | 327 | 326 | 325 | 324 | 323 | 322 | 321 | 320 | 319 | 318 | 317 | 316 |     |  |
| 9  | 315 | 314 | 313 | 312 | 311 | 310 | 309 | 308 | 307 | 306 | 305 | 304 | 303 | 302 | 301 | 300 | 299 | 298 | 297 | 296 | 295 | 294 | 293 | 292 | 291 | 290 | 289 |     |  |
| 8  | 288 | 287 | 286 | 285 | 284 | 283 | 282 | 281 | 280 | 279 | 278 | 277 | 276 | 275 | 274 | 273 | 272 | 271 | 270 | 269 | 268 | 267 | 266 | 265 | 264 | 263 | 262 |     |  |
| 7  | 261 | 260 | 259 | 258 | 257 | 256 | 255 | 254 | 253 | 252 | 251 | 250 | 249 | 248 | 247 | 246 | 245 | 244 | 243 | 242 | 241 | 240 | 239 | 238 | 237 | 236 | 235 |     |  |
| 6  | 234 | 233 | 232 | 231 | 230 | 229 | 228 | 227 | 226 | 225 | 224 | 223 | 222 | 221 | 220 | 219 | 218 | 217 | 216 | 215 | 214 | 213 | 212 | 211 | 210 | 209 | 208 |     |  |
| 5  | 207 | 206 | 205 | 204 | 203 | 202 | 201 | 200 | 199 | 198 | 197 | 196 | 195 | 194 | 193 | 192 | 191 | 190 | 189 | 188 | 187 | 186 | 185 | 184 | 183 | 182 | 181 |     |  |
| 4  | 180 | 179 | 178 | 177 | 176 | 175 | 174 | 173 | 172 | 171 | 170 | 169 | 168 | 167 | 166 | 165 | 164 | 163 | 162 | 161 | 160 | 159 | 158 | 157 | 156 | 155 | 154 |     |  |
| 3  | 153 | 152 | 151 | 150 | 149 | 148 | 147 | 146 | 145 | 144 | 143 | 142 | 141 | 140 | 139 | 138 | 137 | 136 | 135 | 134 | 133 | 132 | 131 | 130 | 129 | 128 | 127 |     |  |
| 2  | 126 | 125 | 124 | 123 | 122 | 121 | 120 | 119 | 118 | 117 | 116 | 115 | 114 | 113 | 112 | 111 | 110 | 109 | 108 | 107 | 106 | 105 | 104 | 103 | 102 | 101 | 100 |     |  |
| 1  | 99  | 98  | 97  | 96  | 95  | 94  | 93  | 92  | 91  | 90  | 89  | 88  | 87  | 86  | 85  | 84  | 83  | 82  | 81  | 80  | 79  | 78  | 77  | 76  | 75  | 74  | 73  |     |  |
| A  | 72  | 71  | 70  | 69  | 68  | 67  | 66  | 65  | 64  | 63  | 62  | 61  | 60  | 59  | 58  | 57  | 56  | 55  | 54  | 53  | 52  | 51  | 50  | 49  |     |     |     |     |  |
| B  | 48  | 47  | 46  | 45  | 44  | 43  | 42  | 41  | 40  | 39  | 38  | 37  | 36  | 35  | 34  | 33  | 32  | 31  | 30  | 29  | 28  | 27  | 26  | 25  |     |     |     |     |  |
| C  | 24  | 23  | 22  | 21  | 20  | 19  | 18  | 17  | 16  | 15  | 14  | 13  | 12  | 11  | 10  | 9   | 8   | 7   | 6   | 5   | 4   | 3   | 2   | 1   | 72  |     |     |     |  |



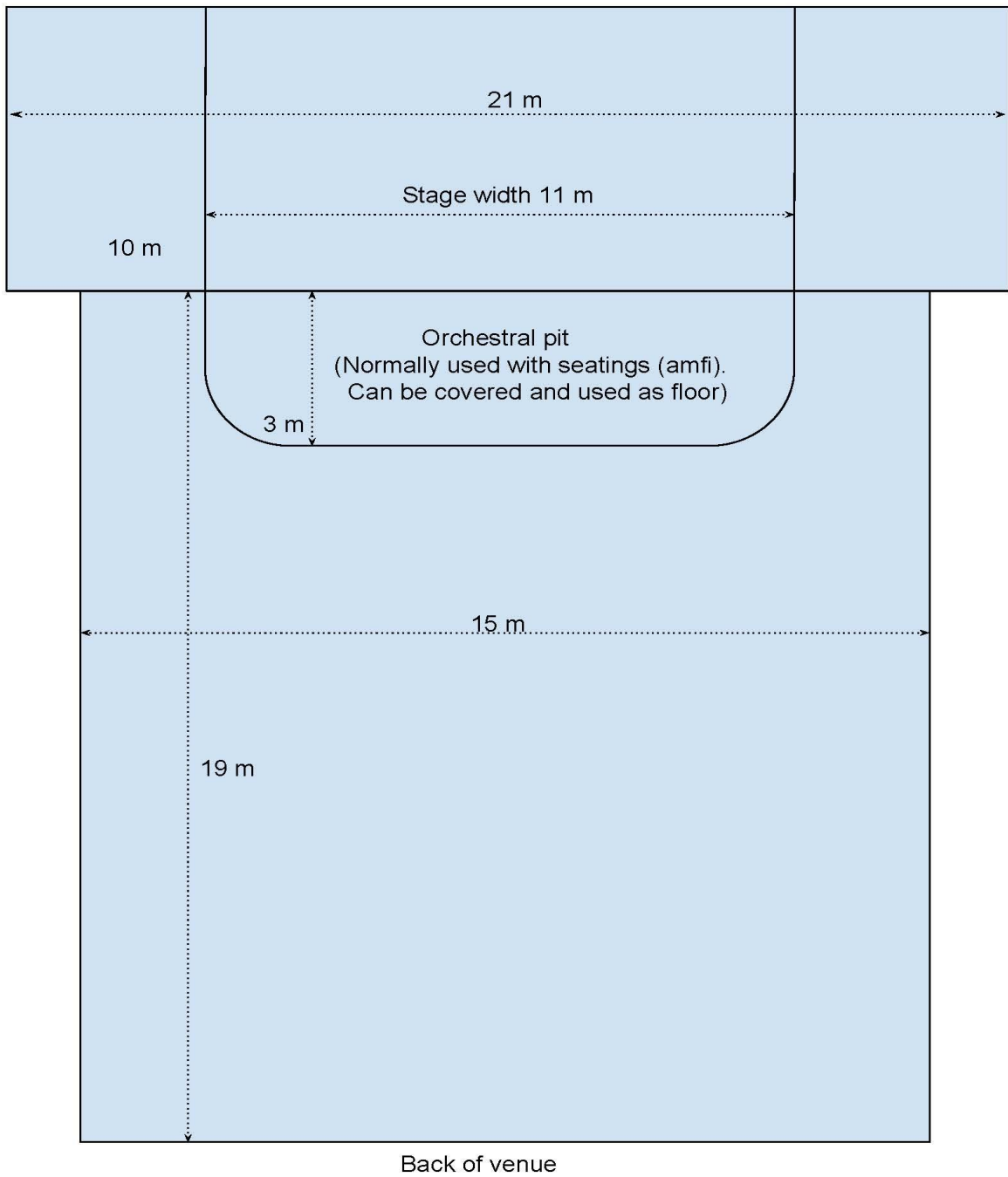
## FOH

Technical seatings for Sound/Light-mixer are situated in row 19-21 in Musikkteateret. See seating plan above.

When amfi seatings are removed FOH can be located at floor level.

## Stage

Surface: Dark oak parquet, with black vinyl dance floor on top



## Power

| Quantity | Location             | Amps | Phase | Volt | Conn. |
|----------|----------------------|------|-------|------|-------|
| 2        | Stage left and right | 63A  | 3     | 400V | 5 Pin |
| 4        | Stage left and right | 32A  | 3     |      | 4 Pin |
| 10       | Stage, Unswitched    | 16A  | 2     | 230V | Shuko |
| 8        | Stage, Switched      | 16A  | 2     | 230V | Shuko |
| 1        | Backstage            | 63A  | 3     | 400V | 5 Pin |
| 2        | Backstage            | 16A  | 2     | 230V | Shuko |

## Sound facilities

### Meyersound Constellation Digital Acoustics

As one of the few concert halls in Europe, Musikteateret is equipped with a Meyersound Constellation

Constellation is a digital approach to controlling reverberation time, early reflections, and other key ingredients vital to the sonic clarity, warmth, and resonance of the venue. The system integrates 128 high-quality loudspeakers, 38 microphones, digital processing units, patented algorithms, and proprietary certification techniques.

Constellation offers an elegantly simple way to transform architectural acoustics with a finger tap, affording a level of sonic flexibility never before possible.

### FOH Console & Processors

| Quantity | Equipment                                | Comments  |
|----------|--|---|
| 1        | Midas Heritage-D HD96 Digital Mixer      | FOH   |
| 1        | Midas DL251                              | 48 Mic input, 16 output for Heritage-D                |
| 1        | Midas DL155                              | 8 Mic input, 8 output,<br>4 AES3 input, 4 AES3 output |
| 1        | Klark Teknik DN9650 with Dante interface | Dante for Midas Heritage-D                            |
| 1        | Lexicon PCM92                            | 2 stereo engines                                      |

## Main Speaker System

| Quantity | Speakers      | Equipment                       | Comment   |
|----------|---------------|---------------------------------|---|
| 1        | PA Controller | Meyer Sound Galileo Calisto 616 | Array processor, controlled by Compass software   |
| 24       | PA Main L&R   | Meyer Sound Mina                | 4 x 3 Line array groups on Left and Right side    |
| 2        | PA Front fill | Meyer Sound UPQ-1P              | Left and Right side                               |
| 8        | PA Front fill | Meyer Sound UPM-1P              | Used in front of audience                         |
| 4        | PA Sub System | Meyer Sound 1100-LFC            | 2 placed above stage and one Left and Right side. |
| 1        | Cinema Center | Meyer Sound UPQ-1P              | Positioned on request                             |
| 1        | Cinema Center | Meyer Sound 600-HP              | Positioned on request                             |

## Stage Monitor System

| Quantity | Equipment            | Comment  |
|----------|----------------------|--|
| 4 (8 ch) | LAB Gruppen IDP 2400 | 2x 1200 Watt, DSP, total 8 channels<br>Placed in main Rack         |
| 2 (4 ch) | LAB Gruppen IDP 2400 | 2x 1200 Watt, DSP, total 4 channels<br>Placed in a separate Flight |
| 12       | Turbosound TMW-115   | 15" Passive  |
| 6        | Turbosound iX12      | 12" Active, Bluetooth, with stand                                  |



Wireless Microphone System - Shure Axient Digital  
(16 ch Musikkteateret - 4 ch Sølvsalen - 4 ch flexible)

| Quantity | Manufacturer | Model            | Comment   |
|----------|--------------|------------------|---|
| 6        | Shure        | AD4QE-A          | Quad Channel Receiver (470-636 MHz)             |
| 24       | Shure        | ADX LEM03        | Bodypack Transmitter (470-636 MHz)              |
| 4        | Shure        | ADX2             | Handheld Transmitter Beta58 (470-636 MHz)       |
| 2        | Shure        | ADX2             | Handheld Transmitter KSM9HS Black (470-636 MHz) |
| 4        | Shure        | AD3              | Plug-On Transmitter (470-636 MHz)               |
| 1        | Shure        | AXT600           | Axient Spectrum Manager                         |
| 12       | DPA d:fine   | 4066/4088 + 4063 | Headset Microphone                              |

Standard Microphones

(May be used in Sølvsalen as well. Additional microphones at page 17)

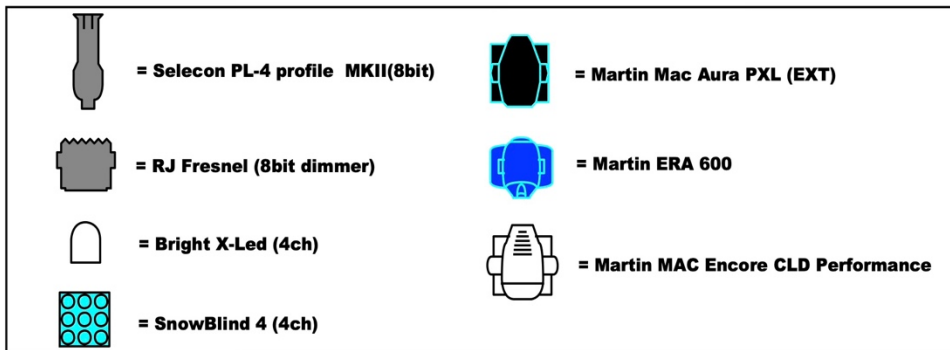
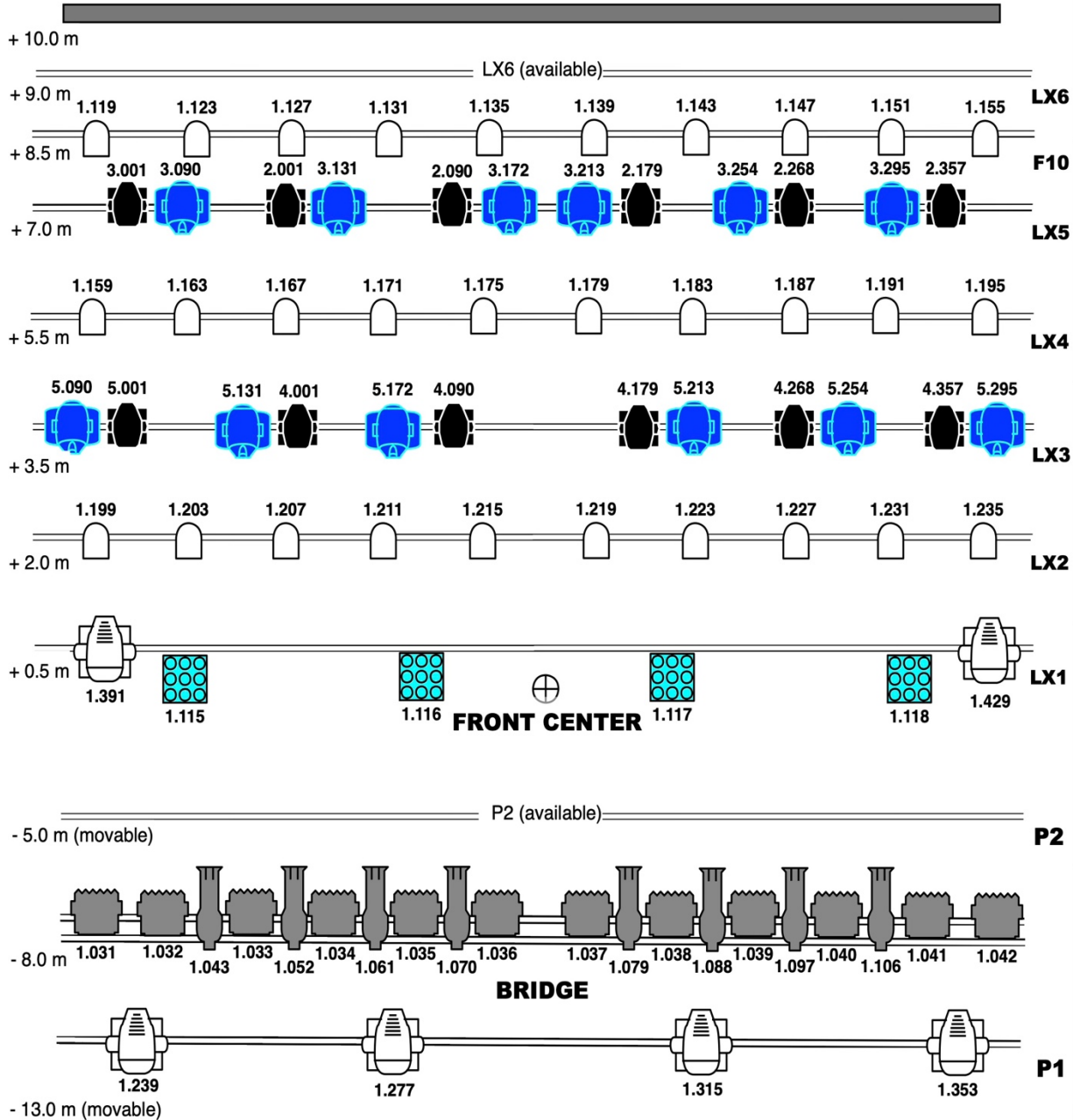
| Quantity | Manufacturer | Model        | Comment        |
|----------|--------------|--------------|----------------|
| 12       | Shure        | Beta 58A     |                |
| 4        | Shure        | SM58A        |                |
| 8        | Shure        | SM57-LCE     |                |
| 1        | Shure        | Beta 52A     |                |
| 1        | Shure        | Beta 91A XLR |                |
| 1        | Shure        | SM7B         |                |
| 2        | Shure        | KSM9 HS      |                |
| 3        | Sennheiser   | e906         |                |
| 4        | Sennheiser   | e904         |                |
| 2        | Sennheiser   | MK 416       | Shotgun mic    |
| 4        | AKG          | C414         |                |
| 8        | AKG          | C480B        |                |
| 2        | AKG          | C451 B/ST    | Matched stereo |

## **Lighting facilities**

Overview of standard configuration of DMX addresses and universe are available upon request.

| Quantity | Manufacturer  | Model                           | Comment                                    |
|----------|---------------|---------------------------------|--|
| 1        | MA Lightning  | GrandMA 3 Light                 | FOH  |
| 1        | MA Lightning  | GrandMA 3 PU Medium             | Backstage - tech. area                     |
| 12       | Martin        | MAC Aura PXL                    | LX 3 & 5                                   |
| 12       | Martin        | ERA 600                         | LX 3 & 5                                   |
| 30       | Bright Norway | XLED - RGBW LED Wash            | LX 2 & 4, F10                              |
| 4        | Snow          | SnowBlind 4                     | LX 1                                       |
| 8        | Selecon       | PL-4 Profile                    | Front - bridge                             |
| 12       | Robert Juliat | RJ ZEP 240 LF Fresnel           | Front - bridge                             |
| 12       | Martin        | MAC Allure Profile              | Available upon request                     |
| 4        | Martin        | MAC Aura Wash                   | Available upon request                     |
| 6        | Martin        | Atomic 3000 LED                 | Available upon request                     |
| 8        | DTS           | Flash 2000L (2-lites)           | Available upon request                     |
| 12       | Bright Norway | XBAR (RGBW)                     | Available upon request                     |
| 12       | Bright Norway | XLED - RGBW LED Wash            | Available upon request                     |
| 6        |               | PAR64 Floor - CP62              | Available upon request                     |
| 8        |               | PAR64 - CP62                    | Available upon request                     |
| 1        | Martin        | P3-050 System Controller        | Available upon request                     |
| 2        | Okero         | 619D                            | 6x13 A 400V w/DMX (available upon request) |
| 1        | Avolites      | Art2000 Powercube dimmer - 400V | (available upon request)                   |

**Back Screen**



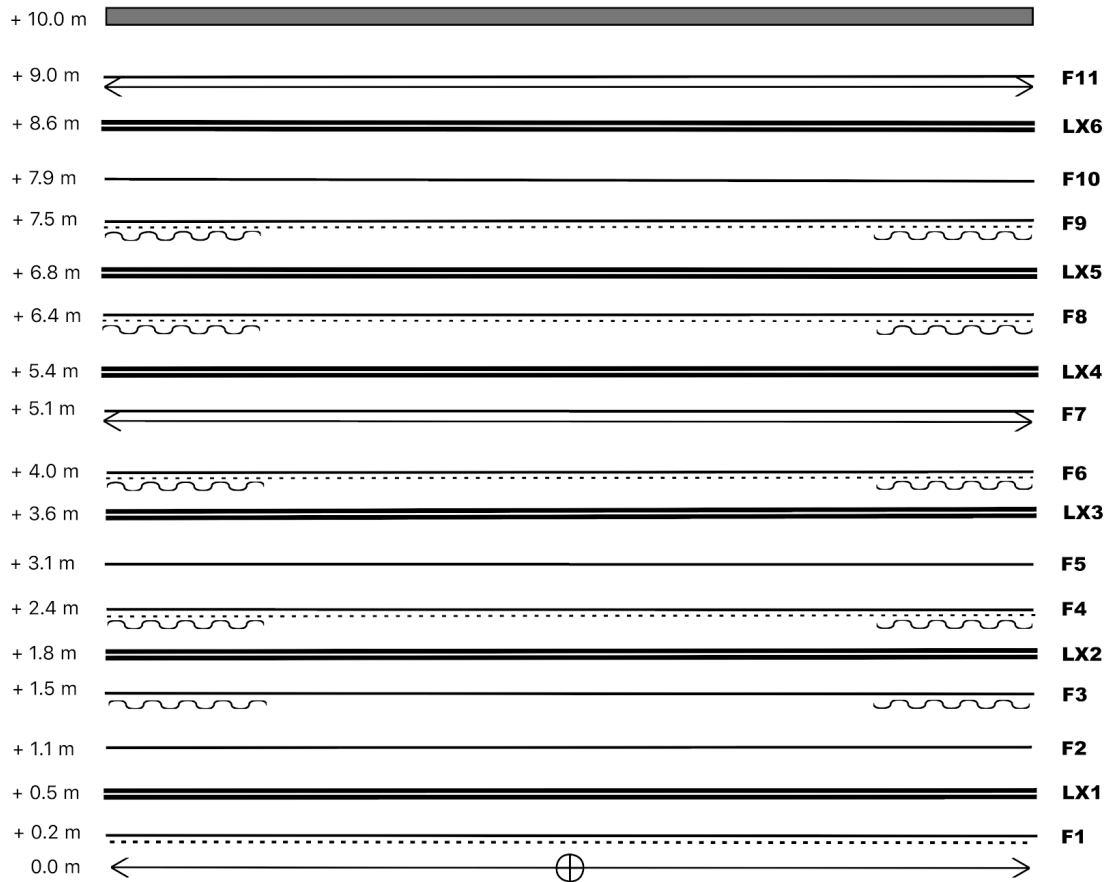
LX max load: 500 kg  
F max load: 250 kg  
P max load: 250 kg

Hazer: 8.508  
Fan: -  
Houselights: 1.470  
Stairs: 1.478  
RowNum: 1.479  
RGB Leds: 1.480  
Led stripe: 1.468

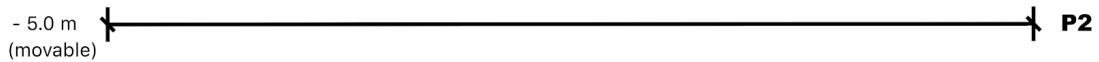
Floor/available: 12 x Martin Mac Allure, 4 x Martin Mac Aura, 6 x Martin Atomic 3000 LED, 12 x Bright X-Led, 12 x Bright X-Bar, 8 x DTS FL2000 2-lites, 6 x PAR64 Floor CP62, 16 x VDO Atomic Dot CLD

KONGSBERG MUSIKKTEATER  
LIFT SYSTEM VIEW

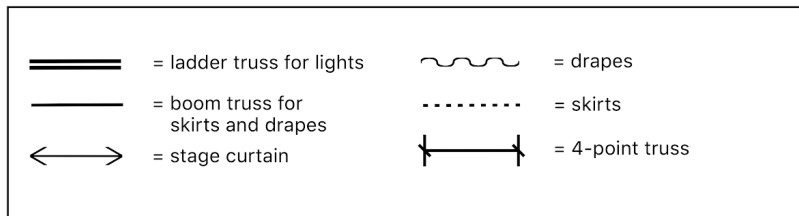
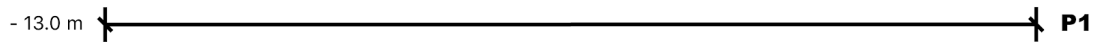
**Back Screen**



**FRONT CENTER**



**BRIGDE**



LX max load: 500 kg  
F max load: 250 kg  
P max load: 250 kg

## AV facilities

| Quantity | Manufacturer            | Comment  |
|----------|-------------------------|--|
| 1        | Panasonic PT RQ22K      | Installation projector, 4K+, 20000 ANSI Lumen, WUXGA   |
| 1        | Panasonic PT-RZ970BEJ   | Video projector, 10 000 ANSI Lumen, laser light source with optional ET-DLE030 short throw lens (Available upon request) |
| 1        | Epson EB-1980WU         | Video projector, 5 000 ANSI Lumen, WUXGA HDMI, VGA input (Available upon request)  |
| 1        | Analogway SPX450        | Video Mixer/Scaler<br>10x SDI/HDMI/VGA input<br>SDI/HDMI output  |
| 1        | Roland V-1HD            | Portable Video switcher<br>4x HDMI input, HDMI output  |
| 1        | Blackmagic Design       | SDI splitter<br>1x SDI in, 4x SDI out  |
| 1        | Blackmagic Design       | HDMI to SDI Converter  |
| 3        | Blackmagic Design       | SDI to HDMI Converter  |
| 6        | BirdDog Studio          | SDI/HDMI to NDI + SDI/HDMI cross converter   |
| 4        | xVision                 | HDMI to HDBaseT Converter  |
| 2        | Lynx Technik            | HDMI to SDI Converter  |
| 2        | Lynx Technik            | SDI to HDMI Converter  |
| 2        |                         | Mobile Projection screen 6 x 4 m,<br>Not rear projectable.   |
|          | SDI signal distribution | 20 patchable SDI in/out on Stage,<br>Technical bridge and FOH  |

# SØLVSALEN - DETAILS

## Seating

Sølvsalen has a standard configuration with a total of 135 seats. See seatplan below.

All seats may be removed, giving room for 200 standing audience.

Sølvsalen may easily be converted to a blackbox theatre using black panels and curtains, all remotely controlled from an Ipad.

### SØLVSALEN

|   |       |     |     |     |     |     |     |     |     |     |     |     |     |     |     |     |       |   |
|---|-------|-----|-----|-----|-----|-----|-----|-----|-----|-----|-----|-----|-----|-----|-----|-----|-------|---|
| 9 |       | 135 | 134 | 133 | 132 | 131 | 130 | 129 | 128 | 127 | 126 | 125 | 124 | 123 | 122 | 121 | 9     |   |
| 8 |       | 120 | 119 | 118 | 117 | 116 | 115 | 114 | 113 | 112 | 111 | 110 | 109 | 108 | 107 | 106 | 8     |   |
| 7 | Trapp | 105 | 104 | 103 | 102 | 101 | 100 | 99  | 98  | 97  | 96  | 95  | 94  | 93  | 92  | 91  | Trapp | 7 |
| 6 |       | 90  | 89  | 88  | 87  | 86  | 85  | 84  | 83  | 82  | 81  | 80  | 79  | 78  | 77  | 76  | 6     |   |
| 5 |       | 75  | 74  | 73  | 72  | 71  | 70  | 69  | 68  | 67  | 66  | 65  | 64  | 63  | 62  | 61  | 5     |   |
| 4 |       | 60  | 59  | 58  | 57  | 56  | 55  | 54  | 53  | 52  | 51  | 50  | 49  | 48  | 47  | 46  | 4     |   |
| 3 |       | 45  | 44  | 43  | 42  | 41  | 40  | 39  | 38  | 37  | 36  | 35  | 34  | 33  | 32  | 31  | 3     |   |
| 2 |       | 30  | 29  | 28  | 27  | 26  | 25  | 24  | 23  | 22  | 21  | 20  | 19  | 18  | 17  | 16  | 2     |   |
| 1 |       | 15  | 14  | 13  | 12  | 11  | 10  | 9   | 8   | 7   | 6   | 5   | 4   | 3   | 2   | 1   | 1     |   |

STAGE

## FOH

FOH in Sølvsalen are situated behind amfi seating.

May be at floor level when amfi seatings are removed.

## Stage

Dimensions

Stage width 10.0 m

Stage depth 5.2 m

When amfi is fully retracted the halls dimensions are:

Hall width: 11.0 m

Hall depth: 13.0 m

Surface: Natural oak parquet

## **Power**

| Quantity | Location             | Amps | Phase | Volt | Conn. |
|----------|----------------------|------|-------|------|-------|
| 2        | Stage left and right | 63A  | 3     | 400V | 5 Pin |
| 1        | Stage right          | 32A  | 3     |      | 4 Pin |
| 2        | Stage, Unswitched    | 16A  | 2     | 230V | Shuko |
| 2        | Stage, Switched      | 16A  | 2     | 230V | Shuko |

## **Sound Facilities**

### FOH Console & Processors

| Quantity | Equipment               | Comments                                  |
|----------|-------------------------|---|
| 1        | Midas M32 Digital Mixer |   |
| 1        | Midas DL-251            | stage box for mixer – 48 input, 16 output |

### Main Speaker/Stage Monitor System

| Quantity | Speakers                | Equipment                         | Comment  |
|----------|-------------------------|-----------------------------------|--|
| 8        | PA Main L&R             | Turbosound Berlin – TBV 123       | Ceiling mounted line array                           |
| 4        | PA Sub system           | Turbosound TBV 118L               |  |
| 1        | PA power amplifier      | LAB Gruppen PLM 12K44 SP – 4x3 kw | 12000w amplifier with LAKE digital signal processing |
| 6        | Stage monitor system    | Seeburg Acoustic Line X4          | 10” passive monitor speaker                          |
| 2        | Stage monitor amplifier | LAB Gruppen IDP 2400              | 4 channels in total                                  |
| 6        | Other                   | Turbosound IQ8 + IQ10             | Speaker system for meeting setup                     |

## Wireless Microphone system

| Quantity | Manufacturer | Model   | Comment                             |
|----------|--------------|---------|-------------------------------------|
| 1        | Shure        | AD4QE-A | Quad Channel Receiver (470-636 MHz) |

## Standard Microphones

(may be used in Musikkteateret as well)

| Quantity | Manufacturer | Model     | Comment        |
|----------|--------------|-----------|----------------|
| 4        | Shure        | SM58-LCE  |                |
| 4        | Shure        | SM57-LCE  |                |
| 1        | Shure        | Beta 52A  |                |
| 2        | AKG          | C451 B/ST | matched stereo |

## ***Lighting facilities***

| Quantity | Manufacturer | Model       | Comment                    |
|----------|--------------|-------------|----------------------------|
| 1        | MA Lightning | MA3 Compact |                            |
| 1        | Jands        | Stage CL    | Available upon request     |
| 6        | Bright       | XLed (6ch)  | Truss - upstage            |
| 8        | Martin       | Mac Aura    | Truss - above amphitheatre |
| 4        | Martin       | Mac Aura    | Truss - upstage            |
| 4        | Martin       | ERA 400     | Truss - upstage            |

Standard configuration of DMX on request.

1 Universe used, 1 universe available for moving heads and other equipment.

Usually patched Universe 1 in ceiling, and Universe 2 on floor.



## **AV**

| Quantity | Manufacturer       | Comment  |
|----------|--------------------|--|
| 2        | Panasonic PT RZ990 | Installation projector, 9400 ANSI lumen, 4K supported, WUXGA.<br>1 directed to front screen, 1 directed to side screen |

## **OTHER EQUIPMENT**

### ***Microphones***

(may be used in both venues)

| Quantity | Manufacturer   | Model      | Comment                        |
|----------|----------------|------------|--------------------------------|
| 2        | Schoeps        | CMC6 / MK4 |                                |
| 1        | Beyerdynamic   | M-88TG     |                                |
| 1        | Shure          | SM-7B      |                                |
| 1        | Electrovoice   | RE-20      |                                |
| 1        | DPA            | d:facto II |                                |
| 4        | DPA            | 4060/4061  | Instruments                    |
| 2        | DPA            | 4011       | Grand piano - clips            |
| 2        | DPA            | 4099       | Grand Piano - magnetic foot    |
| 10       | DPA            | 4099       | with assorted instrument clips |
| 2        | Audio-Technica | AT-5045P   |                                |

## **Sound equipment**

| Quantity | Manufacturer | Model        | Comment                       |
|----------|--------------|--------------|-------------------------------|
| 12       | Klark Teknik | DN1000       | Active DI box                 |
| 3        | Klark Teknik | DN200        | Active stereo DI box          |
| 8        | Turbosound   | IX 12        | Active monitors               |
| 1        | Soundcraft   | Signature 12 | 12 ch analog mixer - portable |

## **Haze and fans**

| Quantity | Manufacturer | Model                 | Comment   |
|----------|--------------|-----------------------|---|
| 2        | MDG          | ATMe                  | 1 located at Musikkteateret<br>1 located at Sølvsalen |
| 1        | Martin       | JEM Glaciator Dynamic | Usually located in Musikkteateret                     |
| 1        | Martin       | JEM ZR44 Himass       |   |
| 1        | Martin       | Jem Compact Hazer Pro | Usually located in Sølvsalen                          |
| 2        | Martin       | JEM AF-1 DMX FAN      | 0-2500rpm 1600m <sup>3</sup> /h                       |

## **Flexible stage system**

Kongsberg Musikkteater is equipped with a Nivtec flexible stage system for building risers or “stage on stage”:

| Quantity | Width | Length | Type                 |
|----------|-------|--------|----------------------|
| 68       | 1 m   | 2 m    | Rectangular platform |
| 15       | 0,5 m | 1 m    | Rectangular platform |
| 6        |       |        | Triangle             |

## ***Backline/Instruments***

### Grand Pianos

Steinway Model D - Musikkteateret only

Yamaha S6 - Sølvsalen only

### Stagepiano:

Nord Stage 3 - 88

### Guitar amps

Fender Twin Reverb

Fender 68' Deluxe Reverb

Roland Blues Cube Stage

### Bass amp

MarkBass Little Mark III preamp

MarkBass Standard 102 HF cabinet

MarkBass 151 cabinet

### Drums

Gretsch Renown Maple - Vintage Pearl

- 22" x 18" bass drum
- 10" x 7" tom
- 12" x 8" tom
- 16" x 14" floor tom
- 14" x 5.5" snare

### Cymbals

Zildjian K Custom Dark Series

- 14" Dark Hi-hat
- 16" Dark Crash
- 18" Dark Crash
- 20" Dark Ride

### Hardware

- 3 x CS755 cymbal stand
- 1 x HS740A Hi-hat stand
- 1 x SS740A snare drum stand
- 1 x FP7210A foot pedal

## ***Vinyl Dance Floor (Musikkteateret)***

6 x 12 m length/1.6m wide

Standard color is black - light grey on the other side

Vinyl Dance Floor cannot be painted, cut or perforated.

## ***Music stands and lights***

60 music stands are available on stage. 50 battery powered LED music stand lights.

## ***Dressing rooms***

2 Dressing rooms located at ground floor.

One with toilet, shower and full body frontlit mirror. One with 3 frontlit makeup/mirrors.

4 dressing rooms at 3rd floor.

All with 4 frontlit mirrors, full body mirror, shower, TV monitoring with sound. 3 toilets nearby.

Green Room at 3rd floor. Kitchen and kitchen inventory, sofa, TV monitoring with sound.

Iron, ironing board, and hairdryers are available by request.

All dressing rooms can be locked.